

SMITH

MAINTENANCE



WWW.SMITHMAINTENANCE.CO.UK

The very best of British

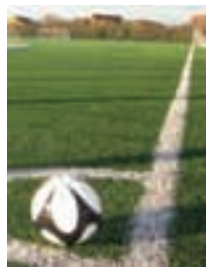


Maintenance Experts for all Artificial, Polymeric and Natural Sports Surfaces

SMITH Maintenance: experts in caring

for all-weather artificial pitches, athletics tracks, hard court surfaces and natural grass sports fields. A division of Smith Construction (Heckington) Ltd - designers and builders of high quality sports facilities nationwide. We understand the need for an efficient and effective maintenance service designed to maximise the life of your facility, making sure the surface performs at its best and always looks good. We make sure you, the players and athletes, get the most from your surface.





SMITH Maintenance: planned, regular, reactive, rescue and refurbishment maintenance

for all types of sports surfaces. Our aim is to provide tailored service solutions which support maximum, safe use of your sports surface, whilst sustaining and improving its performance and increasing its life. We do this with the latest specialist machinery and a dedicated team of experienced professionals who have a real pride in the job.

- ✔ Planned regular service agreements for routine, cost effective, care and preventative maintenance on all sports surfaces
- ✔ Reactive maintenance services to ensure one-off works are completed as and when required
- ✔ Rescue and repair services for emergency work and repairs to artificial grass, polymeric, acrylic and tarmacadam surfaces
- ✔ Refurbishment and rejuvenation services to restore surface performance properties, play characteristics and aesthetics
- ✔ Resurfacing of 3G, sand dressed and sand filled pitches, shock pad repairs and renewals
- ✔ Resurfacing of polymeric athletics tracks and games areas
- ✔ Repairs and replacement of floodlighting, fencing and sports equipment
- ✔ Remedial drainage and civil engineering works, disabled access schemes, roadways, paths and installation of street furniture



Planned, regular and reliable services

You can depend on SMITH Maintenance and gain the most from your maintenance budget. We provide Complete Care or Shared Care Service Agreements for all types of surfaces.

With a routine, yet flexible, care plan, designed to suit you and deliver maximum benefits to your surface, you can be sure the very best results and high standards are retained throughout the whole life cycle of your sports surface.

The SMITH Maintenance technicians are competent, polite and friendly. They are fully trained and experienced in all aspects of pitch, track, and court care. They work efficiently in accordance with health and safety regulations, and are fully qualified for the application of chemical treatments. They are DBS registered and accustomed to carrying out specialist maintenance duties at schools, colleges, community centres, sports clubs and universities in a professional manner, with the upmost attention to detail.

SMITH Maintenance realise your need for an efficient service, keeping your facility operational at all times. We start by undertaking a pre-maintenance survey to assess the condition of the surface, including compaction and contamination testing. The results and readings are used to help determine the required, immediate, and on-going maintenance service options for you.

Your surfaces are carefully monitored at each service visit by your technician, and regularly assessed and tested throughout their life cycle. We give you the most appropriate recommendations to obtain the best surface longevity, aesthetics, and performance results at all times.

If repairs are needed, these are arranged immediately and carried out swiftly with minimum disruption to usage.

We continually invest in new machinery and specialist equipment to produce the superior results our customers have come to expect from us.



Rescue and Refurbishment Services

SMITH Maintenance offer combined 3G Turf Pitch Preparation Maintenance and Independent Laboratory Testing for inclusion on The FA Pitch Register; for when your pitch is in need of a little extra special care to improve its performance and play properties.

Specialist De-compaction and Deep Cleaning Services revive 3G, sand filled and sand dressed all-weather pitch surfaces to improve the performance characteristics and maximise the life expectancy.

Total Surface Rejuvenation massively improves surface performance, drainage capabilities and aesthetics, prolonging the period before resurfacing becomes necessary. Repairs to shock pads, carpets, and moss and weed control treatments are all part of the restoration process. The dynamic treatment can extend pitch life for a number of years, even when a pitch has been neglected. Lifting the carpet pile and replacing infill material with new, your pitch, and facility, will have a new lease of life.



Resurfacing and Renewals

When it comes to resurfacing your pitch or track, SMITH Maintenance and Smith Construction work hand in hand to streamline the whole project. Our technicians do the work around your schedule to minimise disruption and get the facility up and running fast. The in-house capabilities of both teams ensure any remedial works, alterations, upgrades to surrounds, along with the installation of your new surface is made straight forward.

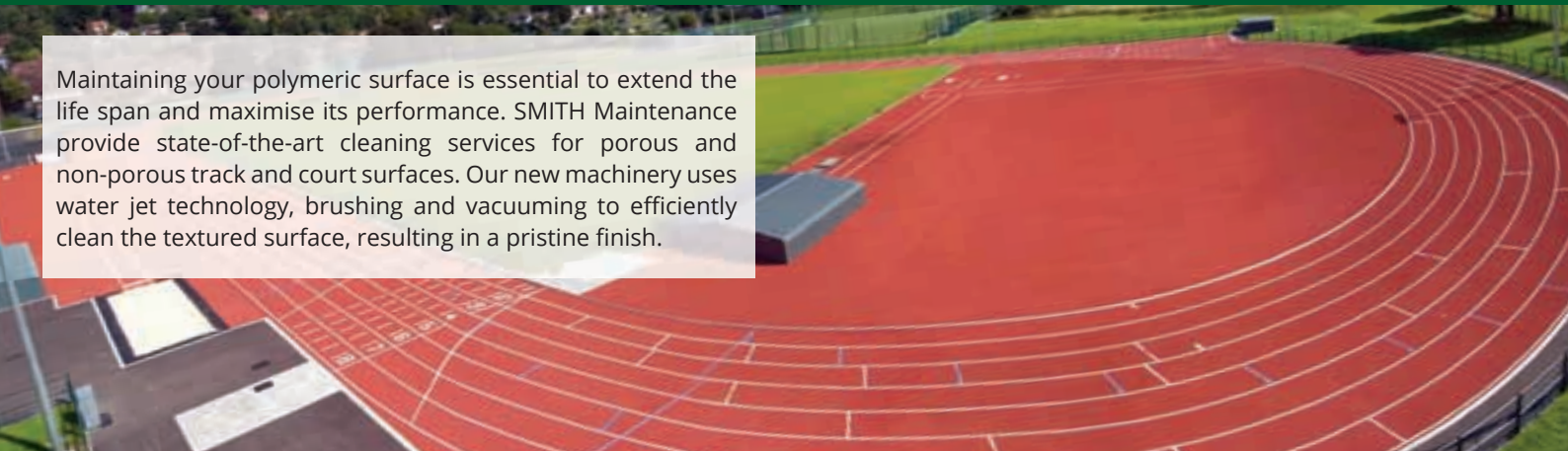
You select from the highest quality new surfaces manufactured, installed and tested to meet FIH, IAAF, Fifa, The FA, RFU requirements.

New sports equipment, viewing areas, access roads and pathways can be constructed and installed at the same time, providing your facility with exactly what it deserves, within a timeframe that fits in with your plans.



Polymeric Athletics Track and Court Cleaning

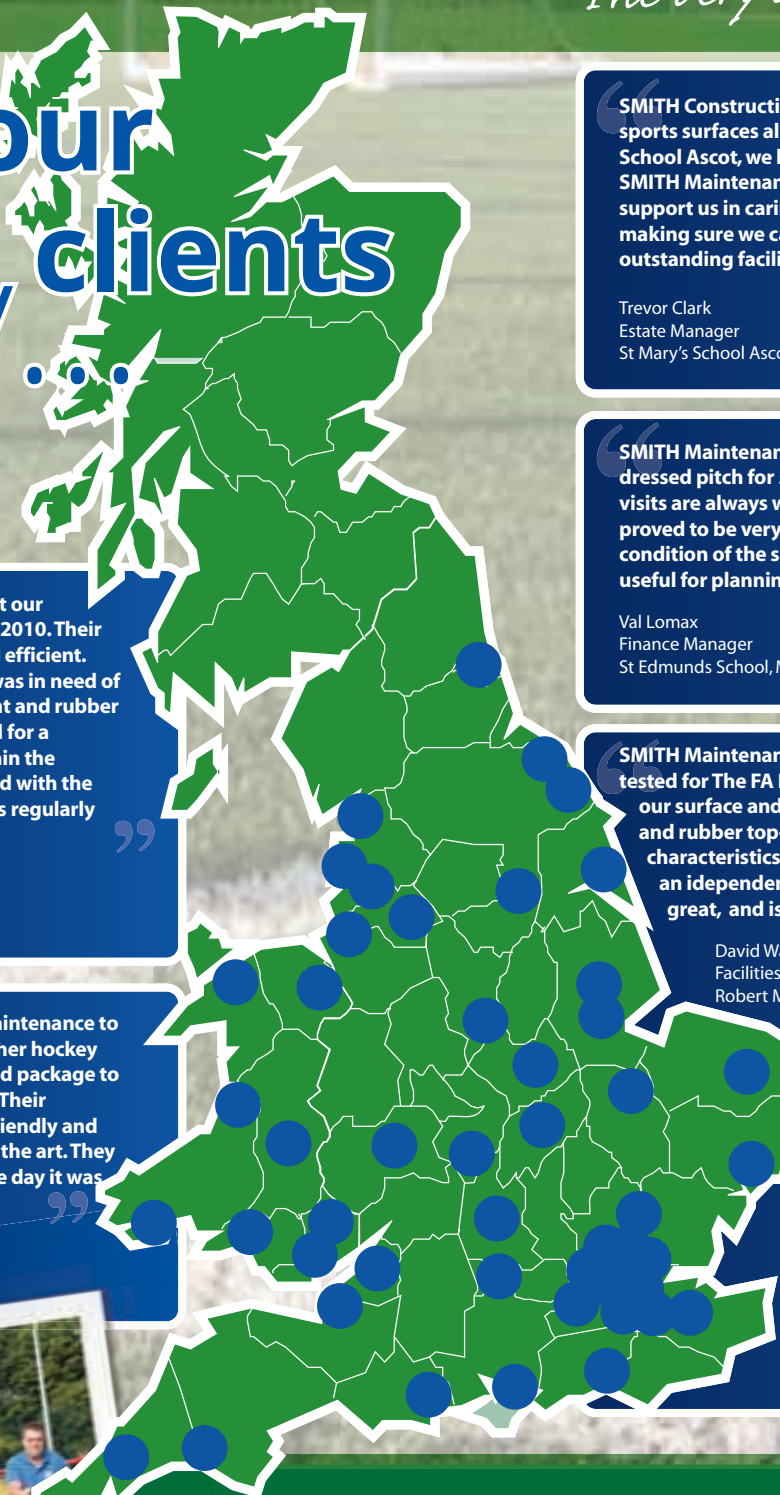
Maintaining your polymeric surface is essential to extend the life span and maximise its performance. SMITH Maintenance provide state-of-the-art cleaning services for porous and non-porous track and court surfaces. Our new machinery uses water jet technology, brushing and vacuuming to efficiently clean the textured surface, resulting in a pristine finish.





The very best of British

What our clients say.



SMITH Maintenance have carried out our fortnightly pitch maintenance since 2010. Their service has always been prompt and efficient. Smiths identified that the 3G pitch was in need of a specialist de-compaction treatment and rubber infill top up. The work was organised for a convenient date and concluded within the agreed time. The Brigade are pleased with the maintenance of our pitch and Smiths regularly report on its condition.

Ed Barry
Headquarters Complex Site Manager
The London Fire Brigade HQ, London

Greenacre School selected Smith Maintenance to care for our newly installed all-weather hockey pitch. They provide an expert tailored package to suit us, which fits around our usage. Their technician is experienced, polite & friendly and their specialist machinery is state of the art. They ensure the pitch looks as good as the day it was installed on every visit.

Koren Maltby
Bursar and Clerk to the Governors
Greenacre School for Girls, London

SMITH Construction design and build exceptional sports surfaces all over the UK. Here at St Mary's School Ascot, we have the same confidence in SMITH Maintenance. Their skilled technicians support us in caring for our all-weather pitches, making sure we can be very proud of our outstanding facilities for years to come.

Trevor Clark
Estate Manager
St Mary's School Ascot, Berkshire

SMITH Maintenance have maintained our sand dressed pitch for 5 years. The regular maintenance visits are always well organised and the service has proved to be very reliable. Their reports on the condition of the surface have also proved very useful for planning and budgeting efficiently.

Val Lomax
Finance Manager
St Edmunds School, Manchester

SMITH Maintenance made having our 3G surface tested for The FA Pitch Register easy; they surveyed our surface and recommended de-compaction and rubber top-up to improve its performance characteristics. They co-ordinated the testing by an independent laboratory and our pitch looks great, and is FA registered for 3 years.

David Walters
Facilities Manager
Robert May's School, Hampshire

SMITH Maintenance has been hugely helpful in terms of the specialist maintenance for our all-weather surface. They have successfully addressed problems with moss and vegetation and we have further rejuvenation works planned with SMITH's this year to improve performance.

Sarah Clarke
Business Manager
Rosebery School, Epsom



The Maintenance team

Contact us

- Phone: +44 (0)1529 462101
- Email: info@smithmaintenance.co.uk
- Web: www.smithmaintenance.co.uk
- Facebook: Smith Construction (Heckington) Ltd
- Twitter: @smithsportscivi
- Google+: Smith Construction (Heckington) Ltd